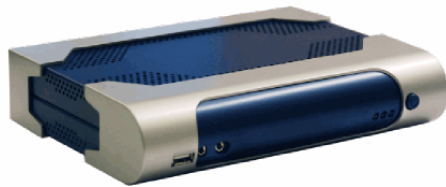


GHS-2500 / GHS-5000 Comparison



GHS-2500 (Out of production)

Greyhound Server 2500 is used for supervision of small to medium sized sites.

Software

Number of connected networks	10 (RS232 / Serial / etc)
Number of connected devices	100 (controller / outstation / PLC / etc)
Number of I/O	2500
Number of schematics	100
Available logspace	approx. 40 MB = 4 million samples

Hardware

Serial ports (RS232)	2
Serial ports (RS485)	0
USB ports	3 (external)
Ethernet ports	3 x 10/100 MBit
Power supply	12V 5A external
Operation environment	5-50 °C, humidity 8-80% non-condensing
Dimensions	48.5 x 234 x 175 mm
Material	Aluminium and plastic housing



GHS-5000

Greyhound Server 5000 is used for supervision of small to medium sized sites.

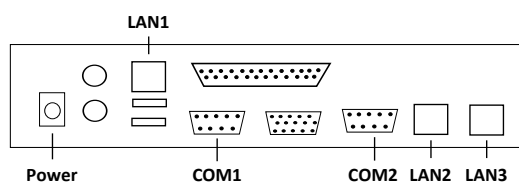
Software

Number of connected networks	10 (RS232 / Serial / etc)
Number of connected devices	100 (controller / outstation / PLC / etc)
Number of I/O	5000
Number of schematics	100
Available logspace	approx. 100 MB = 10 million samples

Hardware

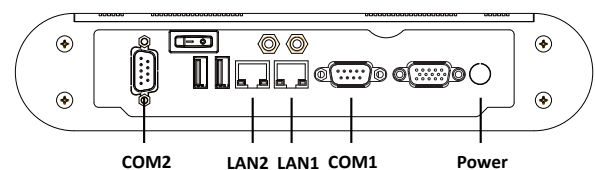
Serial ports (RS232)	1
Serial ports (RS485)	1
USB ports	7 x USB 2.0 (2 external + 5 internal)
Ethernet ports	2 x 10/100/1000 MBit
Power supply	12V 5A external
Operation environment	5-60 °C, humidity 5-95% non-condensing
Dimensions	50 x 246 x 124 mm
Material	Aluminium housing

Connections GHS-2500-01



- Power** - Power connector
- COM1** - Serial device 0 (RS232)
- COM2** - Serial device 1 (RS232)
- LAN1** - Ethernet device 0 (ETH0)
- LAN2** - Ethernet device 1 (ETH1)
- LAN3** - Ethernet device 2 (ETH2)

Connections GHS-5000



- Power** - Power connector
- COM1** - Serial device 0 (RS232)
- COM2** - Serial device 2 (RS485)
- LAN1** - Ethernet device 0 (ETH0)
- LAN2** - Ethernet device 1 (ETH1)